

IMTRON

Messtechnik



КАТАЛОГ ПРОДУКЦИИ

По вопросам продаж и поддержки обращайтесь:

Архангельск (8182)63-90-72	Калининград (4012)72-03-81	Нижний Новгород (831)429-08-12	Смоленск (4812)29-41-54
Астана +7(7172)727-132	Калуга (4842)92-23-67	Новокузнецк (3843)20-46-81	Сочи (862)225-72-31
Белгород (4722)40-23-64	Кемерово (3842)65-04-62	Новосибирск (383)227-86-73	Ставрополь (8652)20-65-13
Брянск (4832)59-03-52	Киров (8332)68-02-04	Орел (4862)44-53-42	Тверь (4822)63-31-35
Владивосток (423)249-28-31	Краснодар (861)203-40-90	Оренбург (3532)37-68-04	Томск (3822)98-41-53
Волгоград (844)278-03-48	Красноярск (391)204-63-61	Пенза (8412)22-31-16	Тула (4872)74-02-29
Вологда (8172)26-41-59	Курск (4712)77-13-04	Пермь (342)205-81-47	Тюмень (3452)66-21-18
Воронеж (473)204-51-73	Липецк (4742)52-20-81	Ростов-на-Дону (863)308-18-15	Ульяновск (8422)24-23-59
Екатеринбург (343)384-55-89	Магнитогорск (3519)55-03-13	Рязань (4912)46-61-64	Уфа (347)229-48-12
Иваново (4932)77-34-06	Москва (495)268-04-70	Самара (846)206-03-16	Челябинск (351)202-03-61
Ижевск (3412)26-03-58	Мурманск (8152)59-64-93	Санкт-Петербург (812)309-46-40	Череповец (8202)49-02-64
Казань (843)206-01-48	Набережные Челны (8552)20-53-41	Саратов (845)249-38-78	Ярославль (4852)69-52-93

сайт: imtron.nt-rt.ru || эл. почта: ins@nt-rt.ru

Signal Conditioning and Data Acquisition Systems

DASIM

- Extremely Universal
- Isolated Inputs
- 1 DSP per Channel
- 2 Channels per Amplifier
- 40 kHz Sample Rate
- Ethernet, CAN
- Analog Outputs
- GPS, Video Connection
- Parameter setting software DaSoft
- Acquisition software DAQSoft
- Drivers for DASyLab, LabVIEW, DIAdem

The most universal system for industrial data acquisition.

With 1 DSP per channel, the amplifiers of the proven DASIM measurement system offer an outstanding performance with minimum space requirements.

The 2-channel Universal amplifier is designed for a vast number of sensors.

Each of the 2 amplifier channels can be set independently and without compromise to any foreseen sensor by our parameter setting software DaSoft.

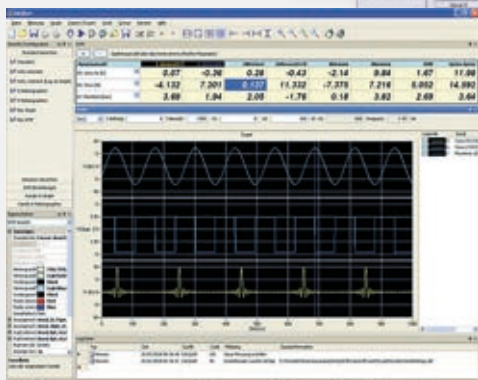
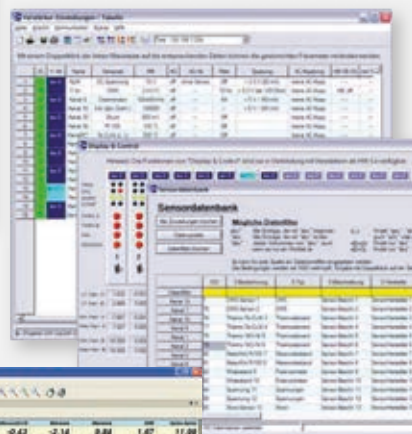
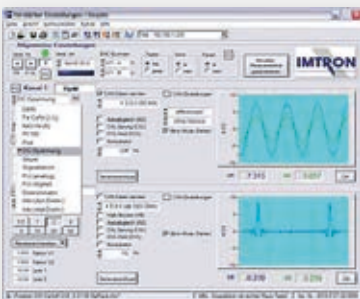
Sensor parameters can be also directly imported out of a sensor data base.

Each measurement channel is isolated and provides adequate power supply for the different types of sensors.

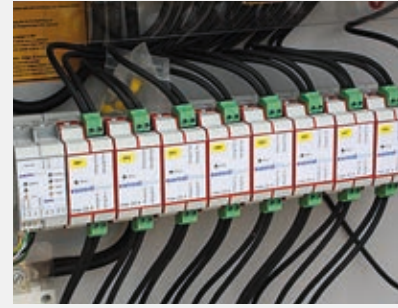
The sample rate per channel is 20 or 40 kS/s. All channels are synchronous.

There are 2 precise analog output signals available per channel. In parallel the digitised signals from the internal high-speed bus are output via an Ethernet and CAN interface.

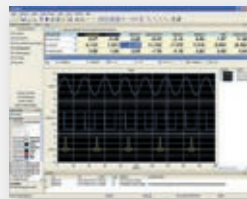
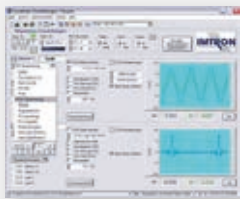
Measurement data are buffered in a FIFO. Parameter setting is done via the Ethernet or an RS232 interface.



IMTRON



SIQUAD



Particularly Cost-Effective

High-end universal and modular computer controlled data acquisition system.

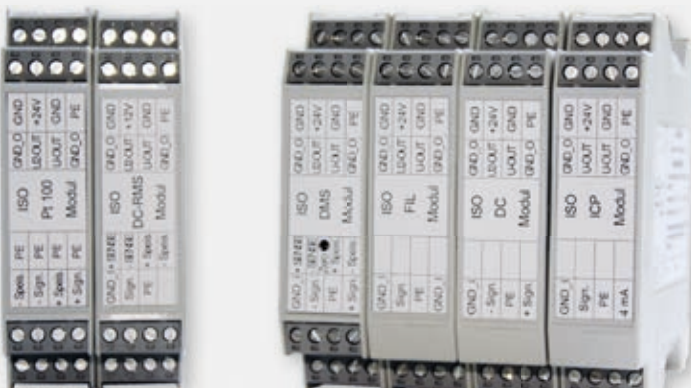
4-channel universal SIQUAD amplifier for a huge number of sensors. 24 bit AD conversion and up to 20 kS/s sample rate.

The modular amplifiers are designed for strain gauge, DC signals, temperature, ICP®, and frequency sensors. Units for analog out and Digital-IO are also available.

Isolated inputs, analog and digital signal output. Ethernet and CAN interface.

All channels are synchronous.

TSA-Modules



Isolated and with Filters

DIN-Rail modules for isolated noiseless signal conversion, conditioning and combining.

Inputs for norm signals as well as strain gauge bridges, DC signals, potentiometers, temperature, ICP® sensors, pulse generators. Outputs as norm signals for current and voltage.

Plug-in filter modules 4th (8th) order for interference suppression.



SIQUAD Compact / Mini

Universal, Stand-alone and Compact Size

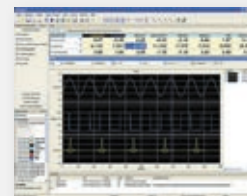
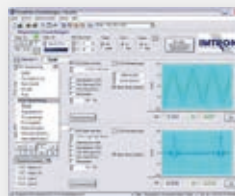
Individual universal and modular amplifiers with 1, 2, 4, 6, and 16 channels for stand-alone data acquisition. Isolated inputs. Digital signal output via CAN.

Various types of chassis.

Decentral and Stand-alone

Individual modular amplifiers in a miniature system for decentralised data acquisition. Digital signal output via Ethernet and CAN interface.

Various types of chassis.



Calibration and Testing

Calibration devices for strain gauge amplifiers with manual or IEEE488 operation.

Bridge resistances 120, 350, and 1000 Ohms. Sensitivities from 0.1 to 50 resp. 250 mV/V in 10 resp. 20 steps. Accuracy $\pm 0.02\%$.

Test standard for physically correct simulation of strain gauge bridges, potentiometers, thermocouples, RTDs, current, voltage, and tachometer generators.

The microprocessor used allows direct entry of sensor values as physical quantities. Calibration and nominal values are accounted for as well.



По вопросам продаж и поддержки обращайтесь:

Архангельск (8182)63-90-72	Калининград (4012)72-03-81	Нижний Новгород (831)429-08-12	Смоленск (4812)29-41-54
Астана +7(7172)727-132	Калуга (4842)92-23-67	Новокузнецк (3843)20-46-81	Сочи (862)225-72-31
Белгород (4722)40-23-64	Кемерово (3842)65-04-62	Новосибирск (383)227-86-73	Ставрополь (8652)20-65-13
Брянск (4832)59-03-52	Киров (8332)68-02-04	Орел (4862)44-53-42	Тверь (4822)63-31-35
Владивосток (423)249-28-31	Краснодар (861)203-40-90	Оренбург (3532)37-68-04	Томск (3822)98-41-53
Волгоград (844)278-03-48	Красноярск (391)204-63-61	Пенза (8412)22-31-16	Тула (4872)74-02-29
Вологда (8172)26-41-59	Курск (4712)77-13-04	Пермь (342)205-81-47	Тюмень (3452)66-21-18
Воронеж (473)204-51-73	Липецк (4742)52-20-81	Ростов-на-Дону (863)308-18-15	Ульяновск (8422)24-23-59
Екатеринбург (343)384-55-89	Магнитогорск (3519)55-03-13	Рязань (4912)46-61-64	Уфа (347)229-48-12
Иваново (4932)77-34-06	Москва (495)268-04-70	Самара (846)206-03-16	Челябинск (351)202-03-61
Ижевск (3412)26-03-58	Мурманск (8152)59-64-93	Санкт-Петербург (812)309-46-40	Череповец (8202)49-02-64
Казань (843)206-01-48	Набережные Челны (8552)20-53-41	Саратов (845)249-38-78	Ярославль (4852)69-52-93

сайт: imtron.nt-rt.ru || эл. почта: ins@nt-rt.ru